

SPEC SHEET + MEASUREMENTS



OGIO® Women's Connection Jogger. LOG707

Product photo



Ready for pretty much everything, this performance jogger stretches, moves and keeps you connected with modern OGIO style.

- 92/8 poly/spandex with durable water-repellent (DWR) finish
- OGIO heat transfer label for tag-free comfort
- Elastic waist
- Exterior plastic-tipped drawcords at waist for an adjustable fit
- Metal zippered front slash pockets
- Gathered elastic cuffs

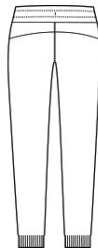
CARE INSTRUCTIONS

Machine Wash Cold. Do Not Use Fabric Softener. Non-Chlorine Bleach When Needed. Tumble Dry Low. Cool Iron If Necessary. Do Not Dry Clean.

Sketches



front



back

SPEC SHEET + MEASUREMENTS



OGIO® Women's Connection Jogger. LOG707

PRODUCT MEASUREMENTS

	XS	S	M	L	XL	2XL	3XL	4XL
Size	2	4/6	8/10	12/14	16/18	20/22	24/26	28/30
Hips	37	39	41	44	47	50	54	58
Waist	14	15	16	17 1/2	19	20 1/2	22 1/2	24 1/2
Inseam	27	27 1/2	28	28 1/2	29	29 1/2	29 1/2	29 1/2

Waist: Measured point to point across the waistband when laid flat.

Inseam: Measured from crotch seam to hem.

SIZE CHARTS

	XS	S	M	L	XL	2XL	3XL	4XL
Size	2	4/6	8/10	12/14	16/18	20/22	24/26	28/30
Waist	24-26	27-28	29-30	31-33	34-36	37-39	40-43	44-47
Hip	34-36	37-38	39-40	41-43	44-46	47-49	50-53	54-57

SPEC SHEET + MEASUREMENTS



OGIO® Women's Connection Jogger. LOG707

HOW TO MEASURE



Waist Measure around the smallest part of the natural waist.

Hips With feet together, measure around the fullest part of hips, keep tape horizontal.

COLORS



Blacktop
PMS Black C